

**BOURNE PUBLIC  
SCHOOLS**  
**SUMMER ENRICHMENT**  
**BES & BIS 2022**

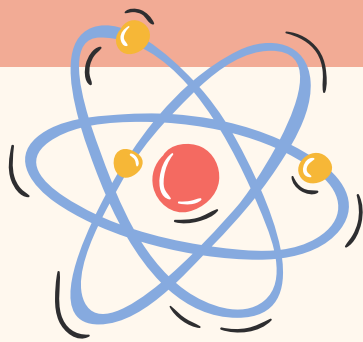
**BES KINDERGARTEN  
READINESS**

INCOMING K; \$275

JULY 11 - 21, MON. - THURS.

9:00AM - 12:00PM

[CLICK FOR DESCRIPTION & REGISTRATION](#)



**BES STEAM OVER THE RAINBOW**

CURRENT K-2; \$275

JULY 11 - 21, MON. - THURS.

9:00AM - 12:00PM

[CLICK FOR DESCRIPTION & REGISTRATION](#)



**BIS ALL THAT JAZZ**

CURRENT 3-5; \$275

JULY 11 - 21, MON. - THURS.

9:00AM - 12:00PM

[CLICK FOR DESCRIPTION & REGISTRATION](#)



**BES AMAZING ME**

CURRENT K-2; \$275

JULY 11 - 21, MON. -

THURS.

9:00AM - 12:00PM

[CLICK FOR DESCRIPTION &](#)

[REGISTRATION](#)

